

New Brunswick

**Integrated Climate Bulletin
Fall 2020 Review
& Winter Outlook**

Jill Maepea

Meteorological Service of Canada

Environment and Climate Change Canada

December 3, 2020



Environment and
Climate Change Canada

Environnement et
Changement climatique Canada

Canada

September 2020; Climate Summary

Station Name	Prov	TC ID	Station Type	Mean Temperature (°C)			Total Precip (mm)		
				Monthly Mean	Normal Mean	Diff from Normal	Monthly Total	Normal Total	Total as % of Normal
BAS CARAQUET	NB	WXS	AU8	13.8	14.2	-0.4			
BAS CARAQUET	NB		DAILY				60.6	73.8	82
BATHURST A	NB	ZBF	NCA	12.9	13.5	-0.6	42.7	84.2	51
BOUCTOUCHE CDA CS	NB	ABT	AU8	14.4	13.8	0.6	68.7	86.3	80
CHARLO AUTO	NB	ZCR	AU8	12.6	12.1	0.6	46.9	79.3	59
DOAKTOWN AUTO RCS	NB	ADN	AU8	13.6	13.5	0.1	41.3	100.2	41
EDMUNDSTON	NB	ERM	AU8	11.4			56.6	94.6	60
FREDERICTON INTL A	NB	YFC	NCA	13.9	13.6	0.3	86.5	87.5	99
FREDERICTON CDA CS	NB	AFC	AU8	14.4	14.0	0.4			
FUNDY PARK (ALMA) CS	NB	AFY	AU8	14.4	13.7	0.7	94.1	122.7	77
GAGETOWN AWOS A	NB	YCX	AU5	14.2	14.7	-0.5			
GRAND MANAN SAR CS	NB	XGM	AU8	12.9			55.0		
KOUCHIBOUGUAC	NB	AKC	AU8	13.6	13.3	0.3	72.9	83.7	87
MECHANIC SETTLEMENT	NB	AMS	AU8	13.1			141.2		
MIRAMICHI RCS	NB	ACQ	AU8	14.1	13.5	0.5	33.2	84.5	39
MISCOU ISLAND (AUT)	NB	WMI	AU8	13.5					
MONCTON INTL A	NB	YQM	NCH	14.6	13.6	1.0	67.1	93.5	72
OAK POINT	NB		DAILY	14.1			96.6	86.1	112
POINT LEPREAU CS	NB	WPE	AU8	13.2	12.4	0.8	71.8	120.9	59
RED PINES	NB	ARP	AU8	12.5	13.1	-0.6	36.9	76.5	48
SAINT JOHN A	NB	YSJ	NCH	13.0	13.0	0.0	94.6	105.6	90
ST. STEPHEN	NB	WSS	AU8	14.5			50.3		
SUSSEX FOUR CORNERS	NB	ASF	AU8	14.1	14.3	-0.2	89.5	99.9	90
WOODSTOCK NEWBRIDGE	NB	EWD	AU8	13.5	13.2	0.3	22.2	95.7	23
Average				13.6	13.5	0.2	66.4	92.6	69
Max				14.6	14.7	1.0	141.2	122.7	112
Min				11.4	12.1	-0.6	22.2	73.8	23



October 2020; Climate Summary

Station Name	Prov	TC ID	Station Type	Mean Temperature (°C)			Total Precip (mm)		
				Monthly Mean	Normal Mean	Diff from Normal	Monthly Total	Normal Total	Total as % of Normal
BAS CARAQUET	NB	WXS	AU8	7.0	7.6	-0.6	154.2	108.0	143
BAS CARAQUET	NB		DAILY				166.6	108.0	154
BATHURST A	NB	ZBF	NCA	6.0	6.8	-0.8	137.1	122.9	112
BOUCTOUCHE CDA CS	NB	ABT	AU8	7.9	7.9	0.0	58.6	95.4	61
CHARLO AUTO	NB	ZCR	AU8	5.2	5.7	-0.5	157.4	84.0	187
DOAKTOWN AUTO RCS	NB	ADN	AU8	6.7	7.0	-0.3	75.5	100.8	75
EDMUNDSTON	NB	ERM	AU8		5.8		191.1	93.6	204
FREDERICTON INTL A	NB	YFC	NCA	7.5	7.5	0.0	60.5	89.1	68
FREDERICTON CDA CS	NB	AFC	AU8	7.8	7.8	0.0	62.2	89.7	69
FUNDY PARK (ALMA) CS	NB	AFY	AU8	8.7	8.2	0.4	108.6	132.9	82
GAGETOWN AWOS A	NB	YCX	AU5	7.8	8.6	-0.8		105.7	
GRAND MANAN SAR CS	NB	XGM	AU8	8.0			67.5		
KOUCHIBOUGUAC	NB	AKC	AU8	7.3	7.6	-0.3	96.0	99.6	96
MECHANIC SETTLEMENT	NB	AMS	AU8	6.8			141.5		
MIRAMICHI RCS	NB	ACQ	AU8	6.9	6.9	0.0	84.7	89.7	94
MISCOU ISLAND (AUT)	NB	WMI	AU8	7.5			150.4		
MONCTON INTL A	NB	YQM	NCH	8.3	7.6	0.7	58.9	113.4	52
OAK POINT	NB		DAILY	8.3	8.6	-0.3	75.1	105.7	71
POINT LEPREAU CS	NB	WPE	AU8		7.6		52.7	115.8	46
RED PINES	NB	ARP	AU8	5.7	6.5	-0.8	120.9	90.2	134
SAINT JOHN A	NB	YSJ	NCH	7.6	7.6	0.0	78.2	116.4	67
ST. STEPHEN	NB	WSS	AU8	7.8			90.8		
SUSSEX FOUR CORNERS	NB	ASF	AU8	8.1	8.1	0.1	75.2	106.5	71
WOODSTOCK NEWBRIDGE	NB	EWD	AU8	6.4	6.6	-0.2	143.6	95.3	151
Average				7.3	7.4	-0.2	104.7	103.1	102
Max				8.7	8.6	0.7	191.1	132.9	204
Min				5.2	5.7	-0.8	52.7	84.0	46



November 2020; Climate Summary

Station Name	Prov	TC ID	Station Type	Mean Temperature (°C)			Total Precip (mm)		
				Monthly Mean	Normal Mean	Diff from Normal	Monthly Total	Normal Total	% of Normal
BAS CARAQUET	NB	WXS	AU8	2.5	1.3	1.3	84.4	102.4	82
BAS CARAQUET	NB		DAILY				96.0	102.4	94
BATHURST A	NB	ZBF	NCA	1.6	0.8	0.8	68.6	103.8	66
BOUCTOUCHE CDA CS	NB	ABT	AU8	3.9	1.7	2.2	68.3	102.9	66
CHARLO AUTO	NB	ZCR	AU8	1.2	-0.7	1.9	77.5	92.3	84
MIRAMICHI RCS	NB	ACQ	AU8	2.8	0.7	2.1	71.1	100.6	71
DOAKTOWN AUTO RCS	NB	ADN	AU8	2.8	0.7	2.1	90.5	112.1	81
EDMUNDSTON	NB	ERM	AU8	-0.4	-0.6	0.2	109.0	91.2	120
FREDERICTON INTL A	NB	YFC	NCA	3.6	1.5	2.1	66.9	106.3	63
FREDERICTON CDA CS	NB	AFC	AU8	3.7	1.8	1.9	79.2	109.9	72
FUNDY PARK (ALMA) CS	NB	AFY	AU8	5.2	3.0	2.2	148.3	158.9	93
GAGETOWN AWOS A	NB	YCX	AU5	4.0	2.5	1.5	53.5	101.8	53
GRAND MANAN SAR CS	NB	XGM	AU8	5.7			86.6		
KOUCHIBOUGUAC	NB	AKC	AU8	3.4	1.2	2.3	79.3	120.6	66
MECHANIC SETTLEMENT	NB	AMS	AU8	3.0			188.1		
MISCOU ISLAND (AUT)	NB	WMI	AU8	2.5			85.4		
MONCTON INTL A	NB	YQM	NCH	4.1	1.9	2.2	70.8	107.2	66
MONCTON A	NB	YQM	NCA	4.3	1.9	2.5			
OAK POINT	NB		DAILY	5.0	2.5	2.5	125.2	101.8	123
POINT LEPREAU CS	NB	WPE	AU8	5.9	2.7	3.2	59.3	140.4	42
RED PINES	NB	ARP	AU8	1.7	-0.1	1.7	75.1	89.4	84
SAINT JOHN A	NB	YSJ	NCH	4.5	2.3	2.2	130.2	134.1	97
ST. STEPHEN	NB	WSS	AU8	4.5			121.7		
SUSSEX FOUR CORNERS	NB	ASF	AU8	4.7	2.4	2.3	80.4	110.0	73
WOODSTOCK									
NEWBRIDGE	NB	EWD	AU8	2.9	0.3	2.6	95.5	103.2	93
Average				3.5	1.4	2.0	92.1	109.6	79
Max				5.9	3.0	3.2	188.1	158.9	123
Min				-0.4	-0.7	0.2	53.5	89.4	42

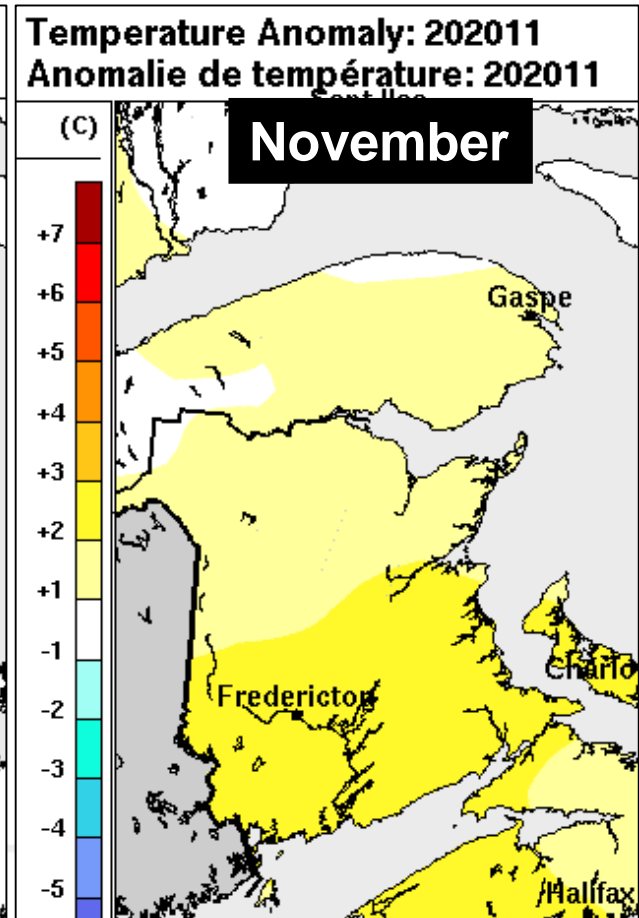
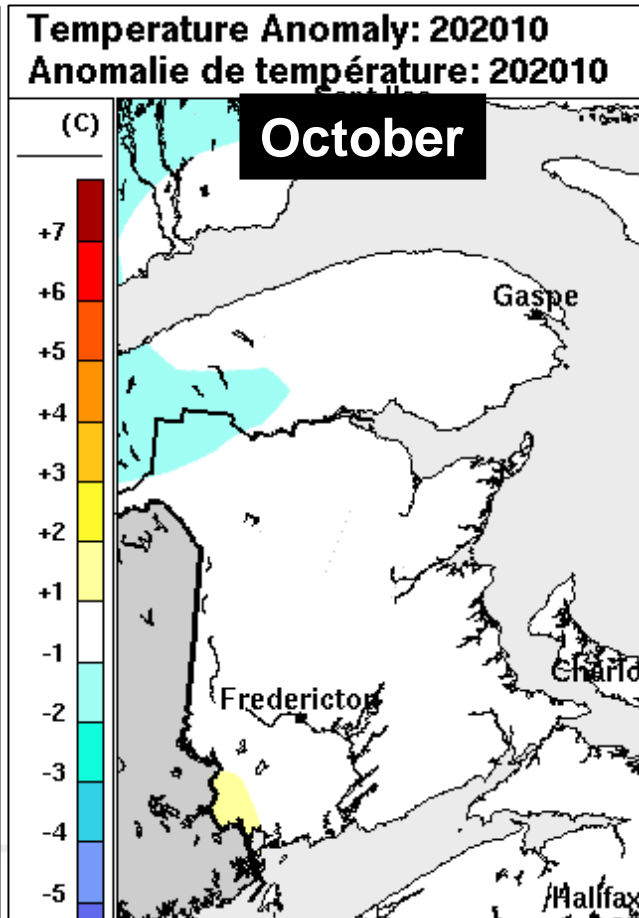
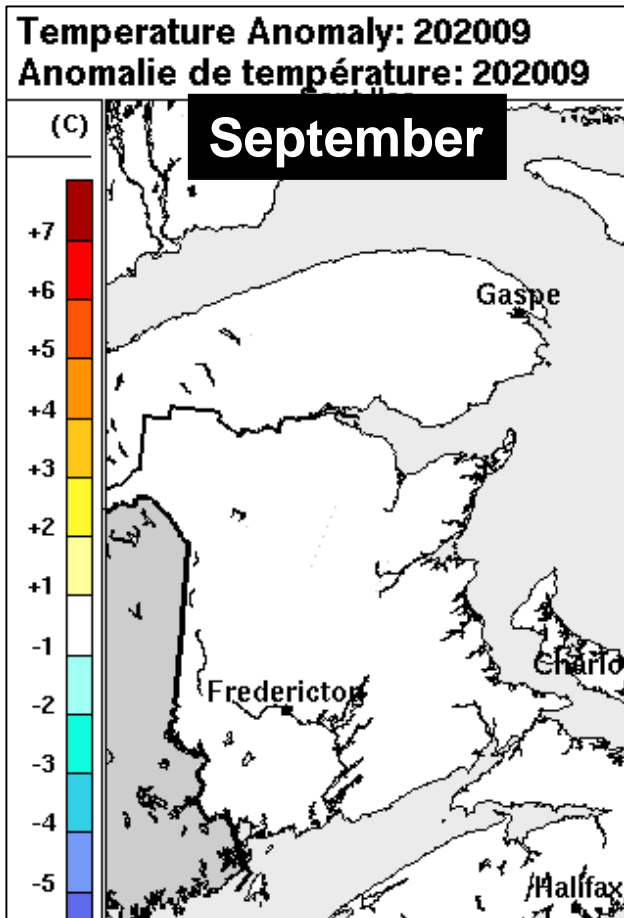


Sep.-Oct.-Nov. 2020; Temperature departure from 1981-2010 mean

near normal (-0.6 to +1.0C)

near normal (-0.8 to +0.7C)

above normal (+0.2 to +3.2C)



Sep.-Oct.-Nov. 2020; Precipitation departure from 2002-2019 mean

Below normal

Above normal north,
Below normal south

Above normal northwest,
Below normal southeast

Precipitation Relative Total: 202009
Total relatif de précipitation: 202009

Precipitation Relative Total: 202010
Total relatif de précipitation: 202010

Precipitation Relative Total: 202011
Total relatif de précipitation: 202011

(%)

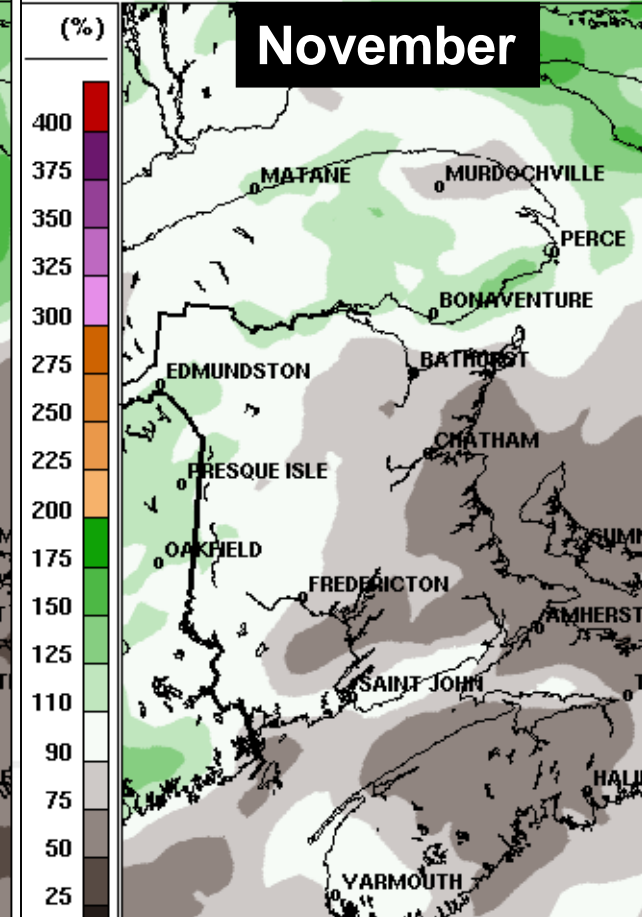
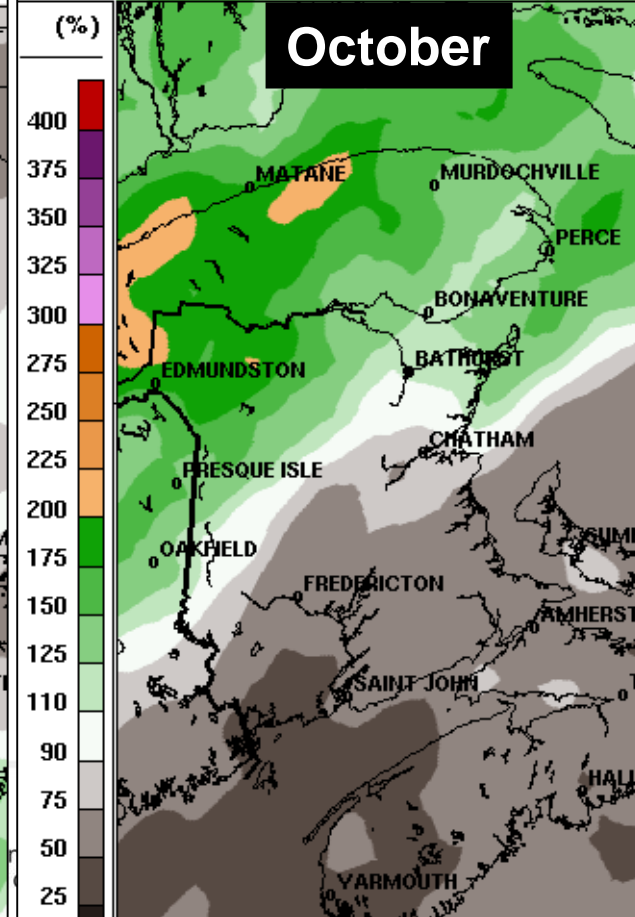
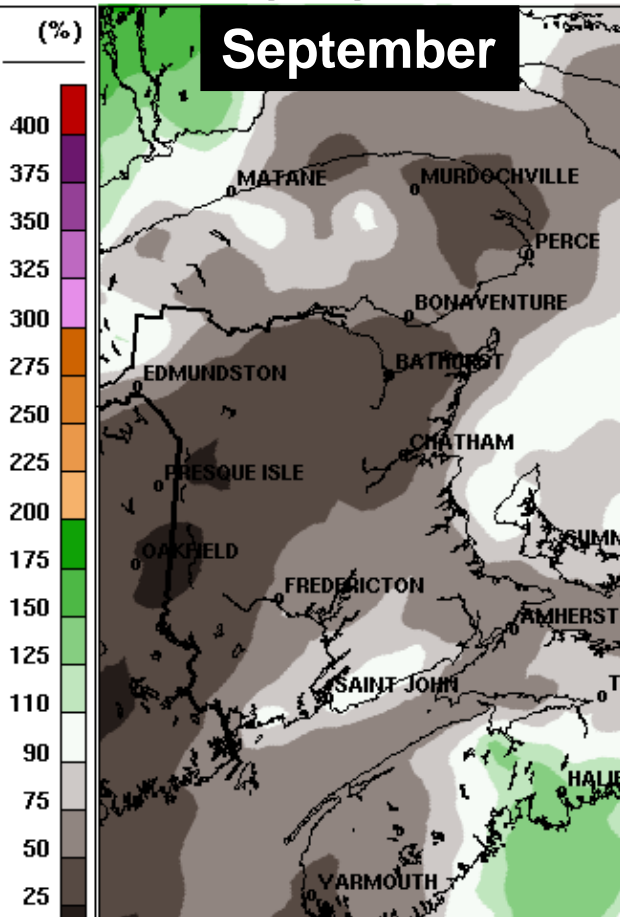
September

(%)

October

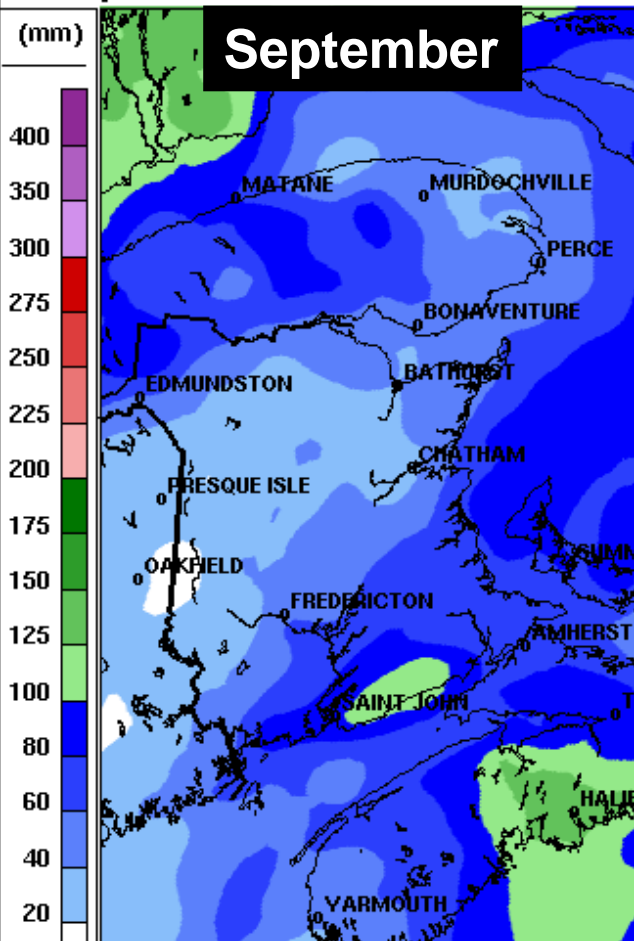
(%)

November

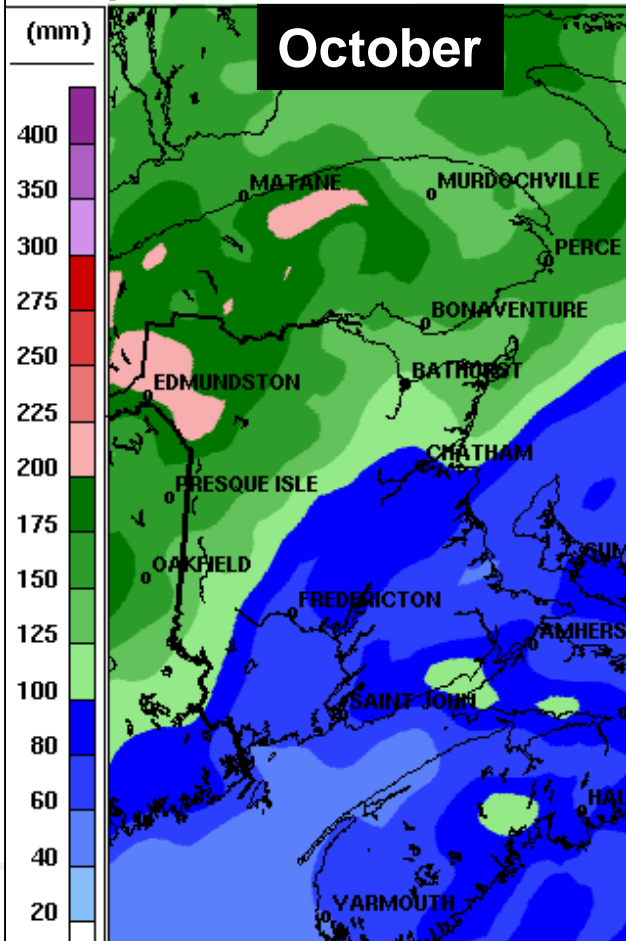


Sep.-Oct.-Nov. 2020; Total precipitation

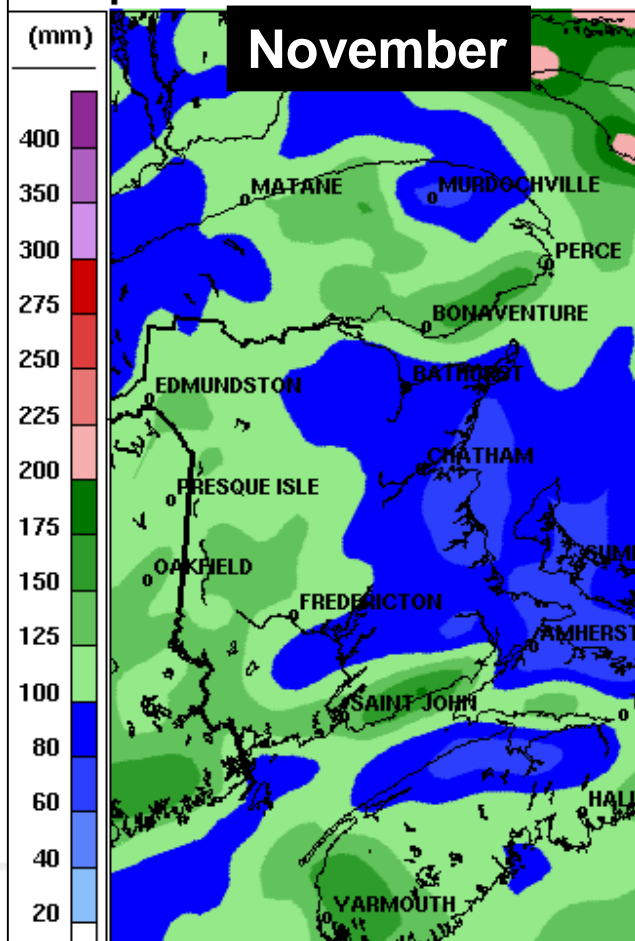
Total precipitation: 202009
Précipitation totale: 202009



Total precipitation: 202010
Précipitation totale: 202010

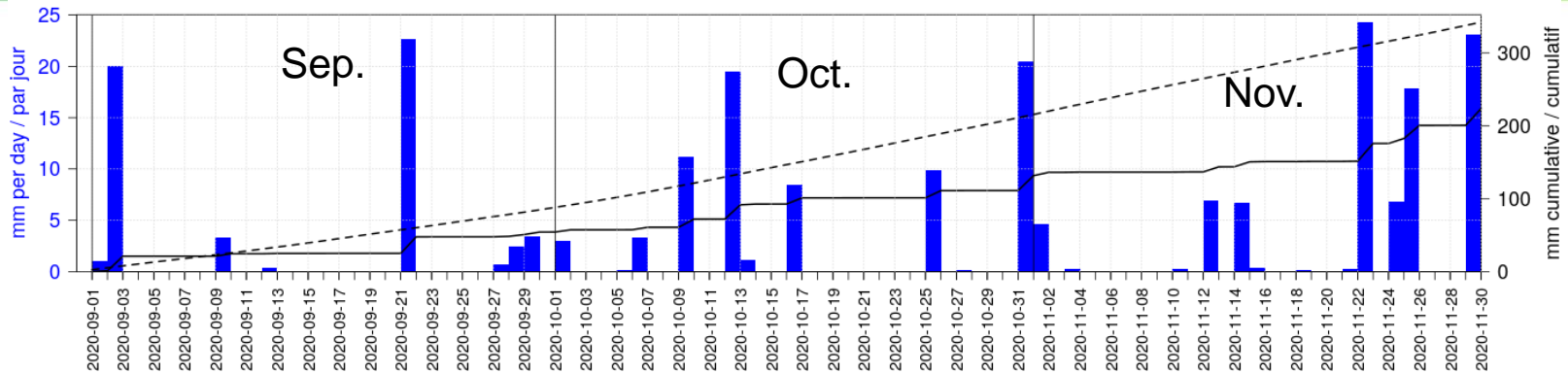


Total precipitation: 202011
Précipitation totale: 202011



2020 Temperature and precipitation – (S,O,N) for Fredericton

Daily Total Precipitation (bars), Cumulative (line) and Cumulative Long-Term Mean (dashed line)
 Précipitation totale quotidienne (barres), Cumulative (trait) et Cumulative moyenne à long terme (tirreté)
 Fredericton, NB (45.94N 66.63W)

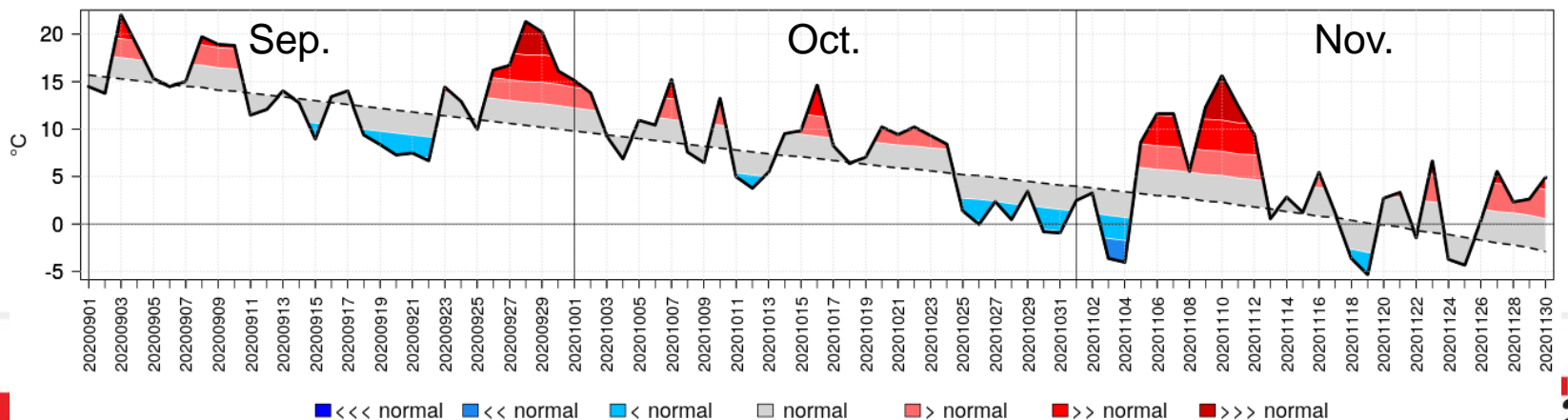


Environnement et
Changement climatique Canada

Environment and
Climate Change Canada

ECCC Gridded Precipitation Analysis / Analyse de précipitation sur grille de ECCC
 Climatology / Climatologie: 2002-2019

Daily Mean Temperature (line), Long-Term Mean (dashed line) and Categories based on Standard Deviations (blue and red)
 Température quotidienne moyenne (trait), Moyenne à long terme (tirreté) et Catégories basées sur des écart-types (bleu et rouge)
 Fredericton, NB (45.94N 66.63W)



Environnement et
Changement climatique Canada

Environment and
Climate Change Canada

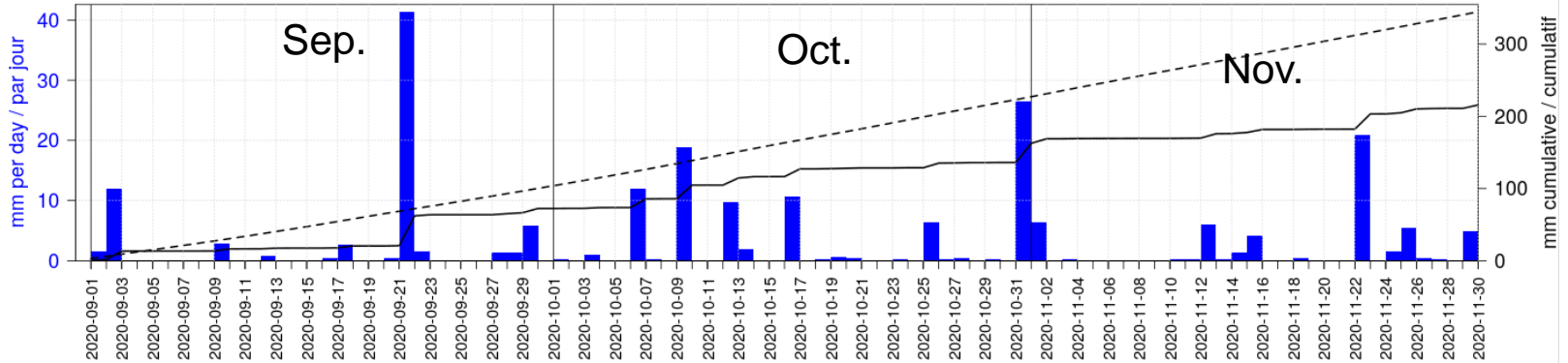
Gridded weather station data / Données de stations météo sur grille
 Climatology / Climatologie: 1981-2010

Stand. dev. thresholds / Seuils d'écart-types: +/- 0.7, 1.3, 2.1



2020 Temperature and precipitation – (S,O,N) for Moncton

Daily Total Precipitation (bars), Cumulative (line) and Cumulative Long-Term Mean (dashed line)
 Précipitation totale quotidienne (barres), Cumulative (trait) et Cumulative moyenne à long terme (tirreté)
 Moncton, NB (46.08N 64.76W)

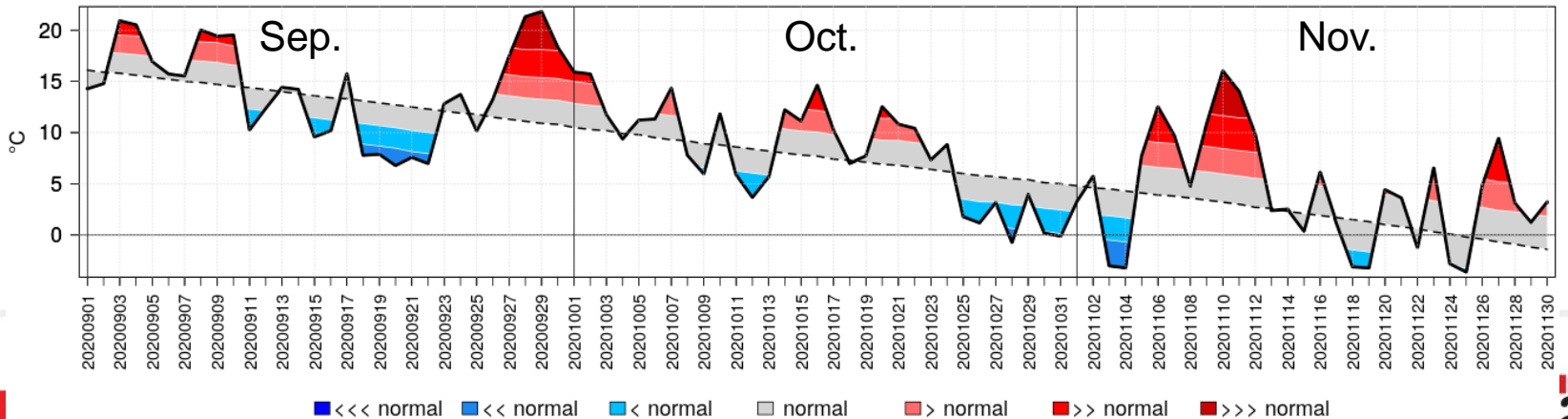


Environnement et
 Changement climatique Canada

Environment and
 Climate Change Canada

ECCC Gridded Precipitation Analysis / Analyse de précipitation sur grille de ECCC
 Climatology / Climatologie: 2002-2019

Daily Mean Temperature (line), Long-Term Mean (dashed line) and Categories based on Standard Deviations (blue and red)
 Température quotidienne moyenne (trait), Moyenne à long terme (tirreté) et Catégories basées sur des écarts-types (bleu et rouge)
 Moncton, NB (46.08N 64.76W)



Environnement et
 Changement climatique Canada

Environment and
 Climate Change Canada

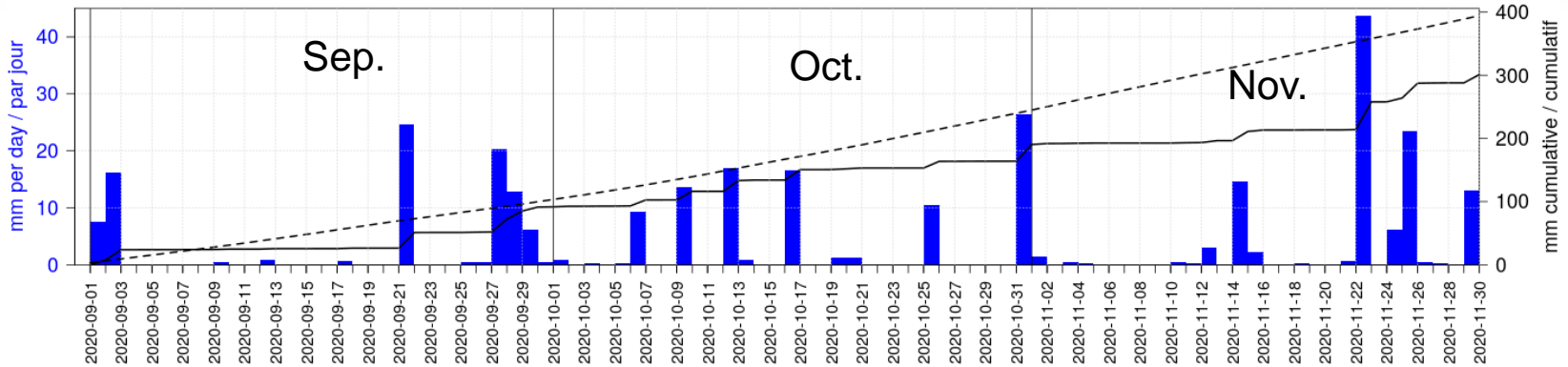
Gridded weather station data / Données de stations météo sur grille
 Climatology / Climatologie: 1981-2010

Stand. dev. thresholds / Seuils d'écart-types: +/- 0.7, 1.3, 2.1

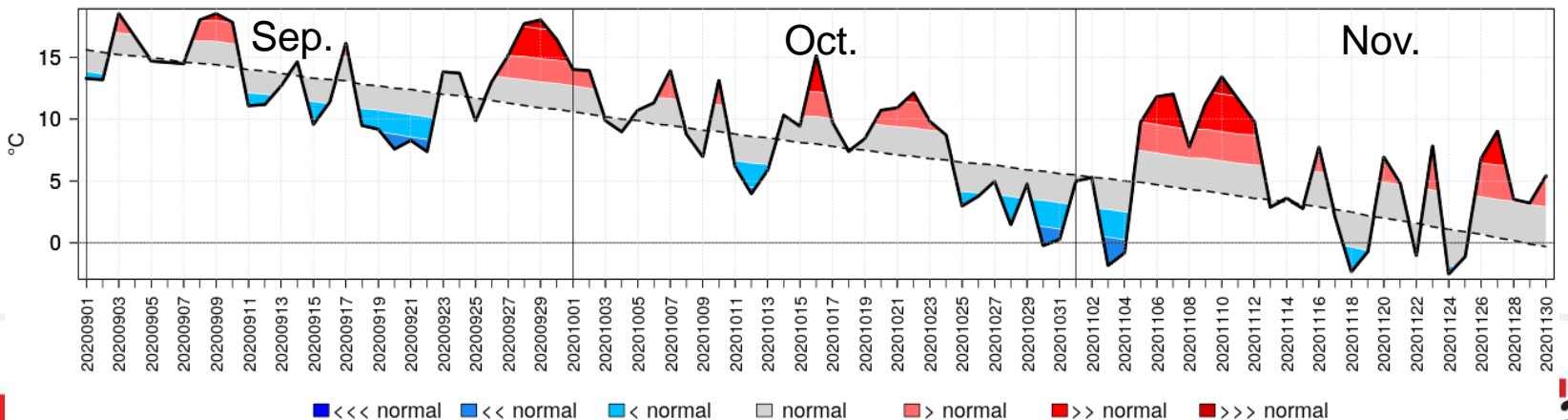


2020 Temperature and precipitation – (S,O,N) for Saint John

Daily Total Precipitation (bars), Cumulative (line) and Cumulative Long-Term Mean (dashed line)
 Précipitation totale quotidienne (barres), Cumulative (trait) et Cumulative moyenne à long terme (tirreté)
 Saint John, NB (45.26N 66.07W)

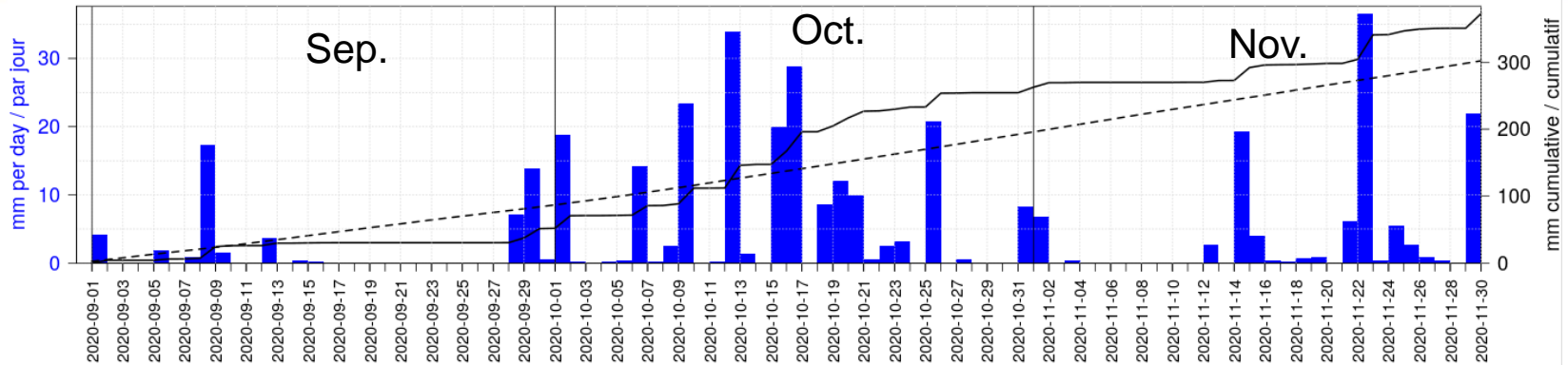


Daily Mean Temperature (line), Long-Term Mean (dashed line) and Categories based on Standard Deviations (blue and red)
 Température quotidienne moyenne (trait), Moyenne à long terme (tirreté) et Catégories basées sur des écart-types (bleu et rouge)
 Saint John, NB (45.26N 66.07W)



2020 Temperature and precipitation – (S,O,N) for Edmundston

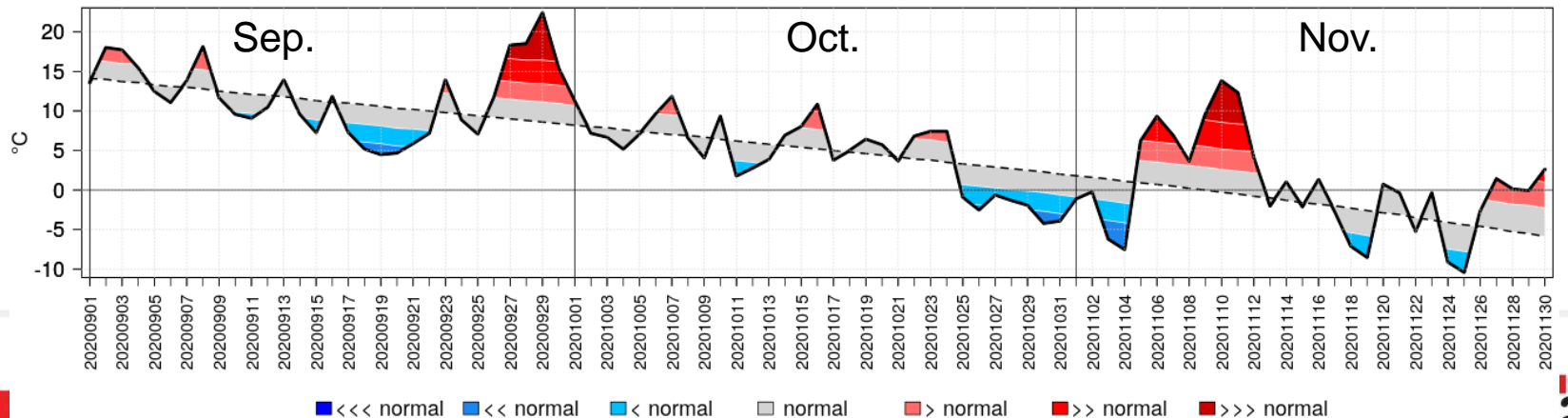
Daily Total Precipitation (bars), Cumulative (line) and Cumulative Long-Term Mean (dashed line)
 Précipitation totale quotidienne (barres), Cumulative (trait) et Cumulative moyenne à long terme (tirreté)
 Edmundston, NB (47.37N 68.33W)



Environnement et Changement climatique Canada / Environment and Climate Change Canada

ECCC Gridded Precipitation Analysis / Analyse de précipitation sur grille de ECCC
 Climatology / Climatologie: 2002-2019

Daily Mean Temperature (line), Long-Term Mean (dashed line) and Categories based on Standard Deviations (blue and red)
 Température quotidienne moyenne (trait), Moyenne à long terme (tirreté) et Catégories basées sur des écart-types (bleu et rouge)
 Edmundston, NB (47.37N 68.33W)



Environnement et Changement climatique Canada / Environment and Climate Change Canada

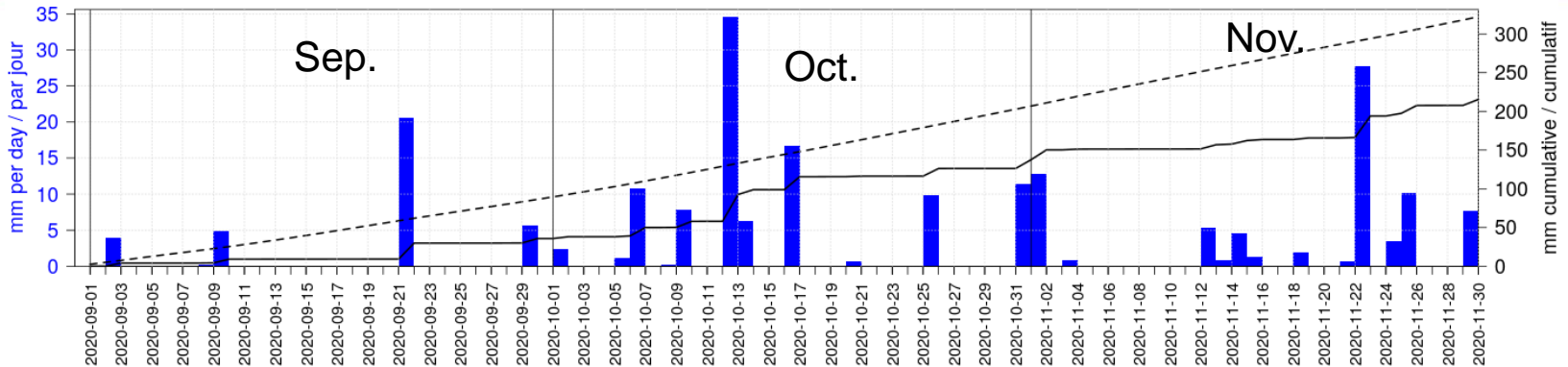
Gridded weather station data / Données de stations météo sur grille
 Climatology / Climatologie: 1981-2010

Stand. dev. thresholds / Seuils d'écart-types: +/- 0.7, 1.3, 2.1



2020 Temperature and precipitation – (S,O,N) for Miramichi

Daily Total Precipitation (bars), Cumulative (line) and Cumulative Long-Term Mean (dashed line)
 Précipitation totale quotidienne (barres), Cumulative (trait) et Cumulative moyenne à long terme (tirreté)
 Miramichi, NB (47.02N 65.50W)

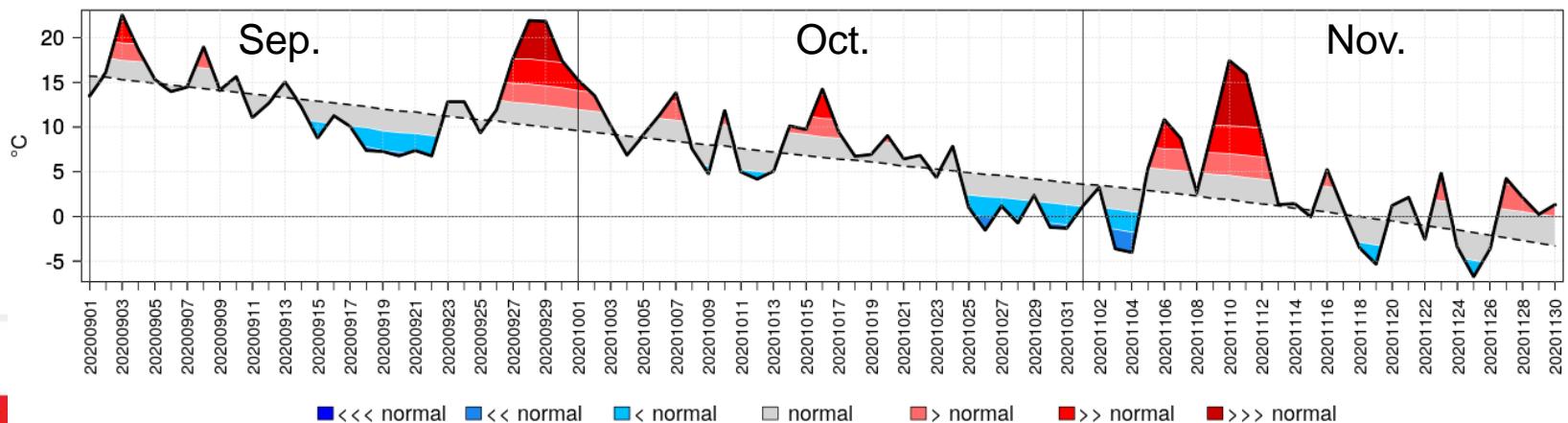


Environnement et
Changement climatique Canada

Environment and
Climate Change Canada

ECCC Gridded Precipitation Analysis / Analyse de précipitation sur grille de ECCC
 Climatologie / Climatologie: 2002-2019

Daily Mean Temperature (line), Long-Term Mean (dashed line) and Categories based on Standard Deviations (blue and red)
 Température quotidienne moyenne (trait), Moyenne à long terme (tirreté) et Catégories basées sur des écart-types (bleu et rouge)
 Miramichi, NB (47.02N 65.50W)



Environnement et
Changement climatique Canada

Environment and
Climate Change Canada

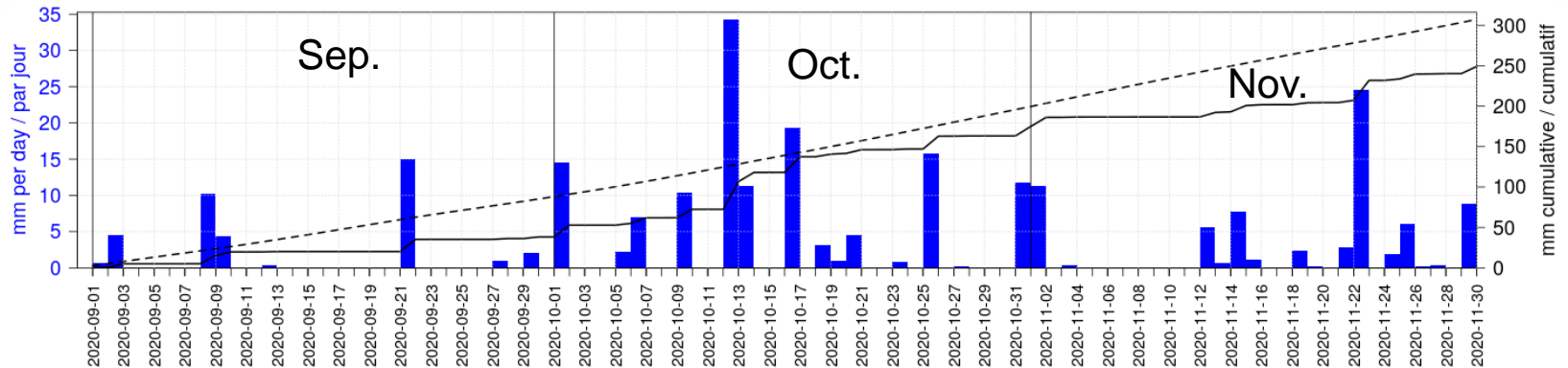
Gridded weather station data / Données de stations météo sur grille
 Climatologie / Climatologie: 1981-2010

Stand. dev. thresholds / Seuils d'écart-types: +/- 0.7, 1.3, 2.1



2020 Temperature and precipitation – (S,O,N) for Bathurst

Daily Total Precipitation (bars), Cumulative (line) and Cumulative Long-Term Mean (dashed line)
 Précipitation totale quotidienne (barres), Cumulative (trait) et Cumulative moyenne à long terme (tirreté)
 Bathurst, NB (47.59N 65.64W)

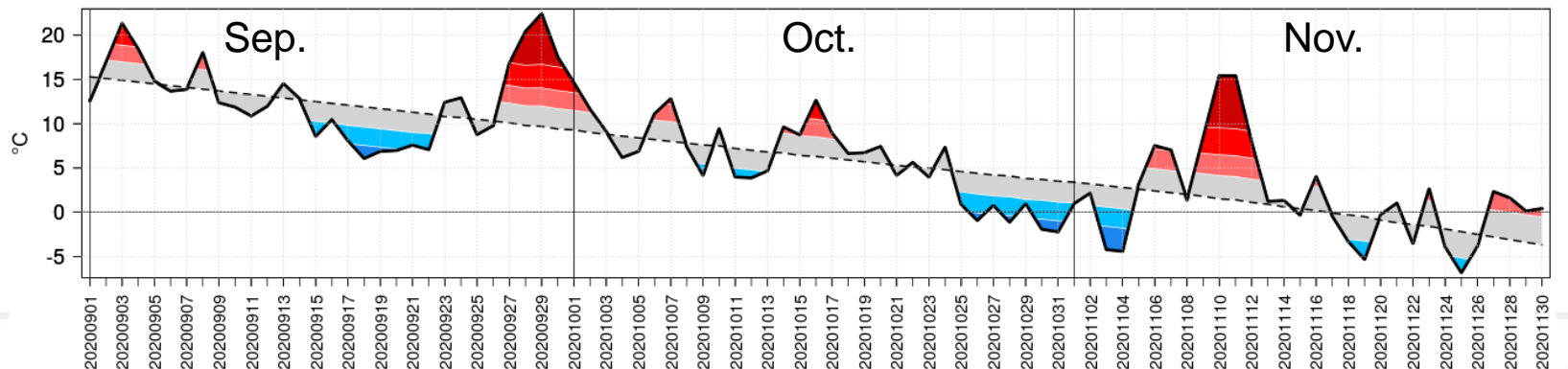


Environnement et
Changement climatique Canada

Environment and
Climate Change Canada

ECCC Gridded Precipitation Analysis / Analyse de précipitation sur grille de ECCC
 Climatology / Climatologie: 2002-2019

Daily Mean Temperature (line), Long-Term Mean (dashed line) and Categories based on Standard Deviations (blue and red)
 Température quotidienne moyenne (trait), Moyenne à long terme (tirreté) et Catégories basées sur des écart-types (bleu et rouge)
 Bathurst, NB (47.59N 65.64W)



■ <<< normal
 ■ << normal
 ■ < normal
 ■ normal
 ■ > normal
 ■ >> normal
 ■ >>> normal



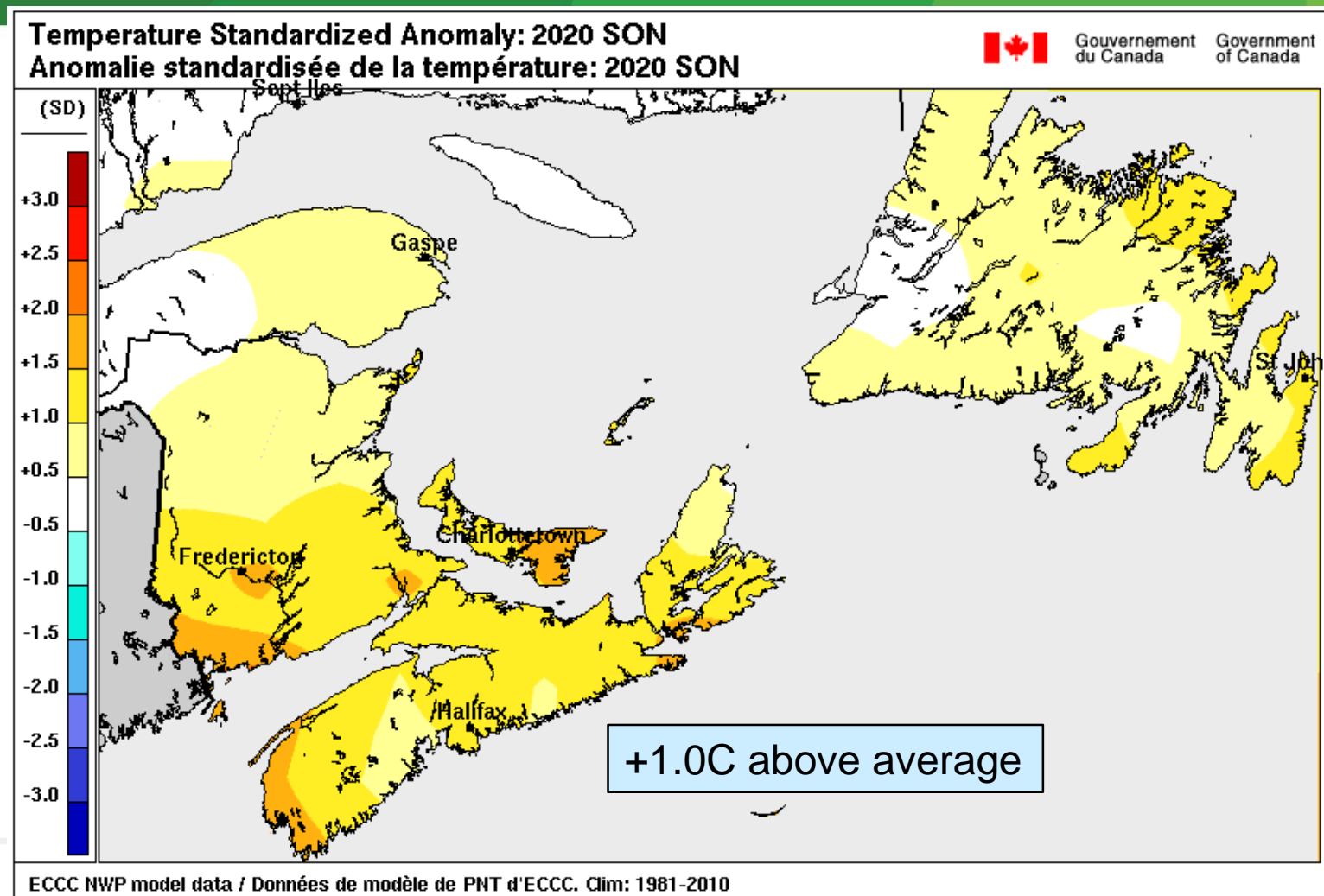
Environnement et
Changement climatique Canada

Environment and
Climate Change Canada

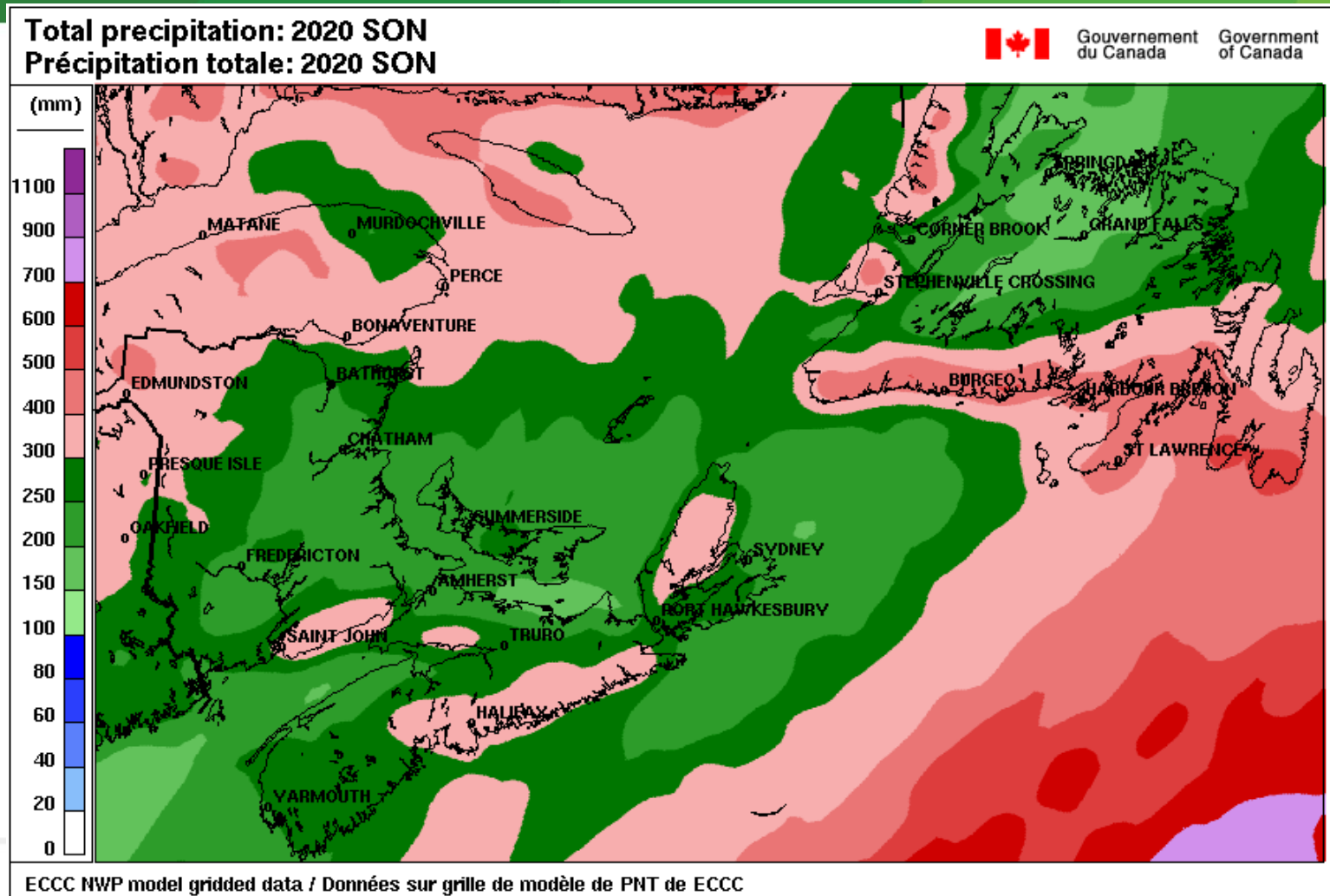
Gridded weather station data / Données de stations météo sur grille
 Climatology / Climatologie: 1981-2010
 Stand. dev. thresholds / Seuils d'écart-types: +/- 0.7, 1.3, 2.1



Fall 2020 (S,O,N) Temperature Departure from 1981-2010 mean



Fall 2020 (S,O,N) Total precipitation



Gouvernement
du Canada

Government
of Canada

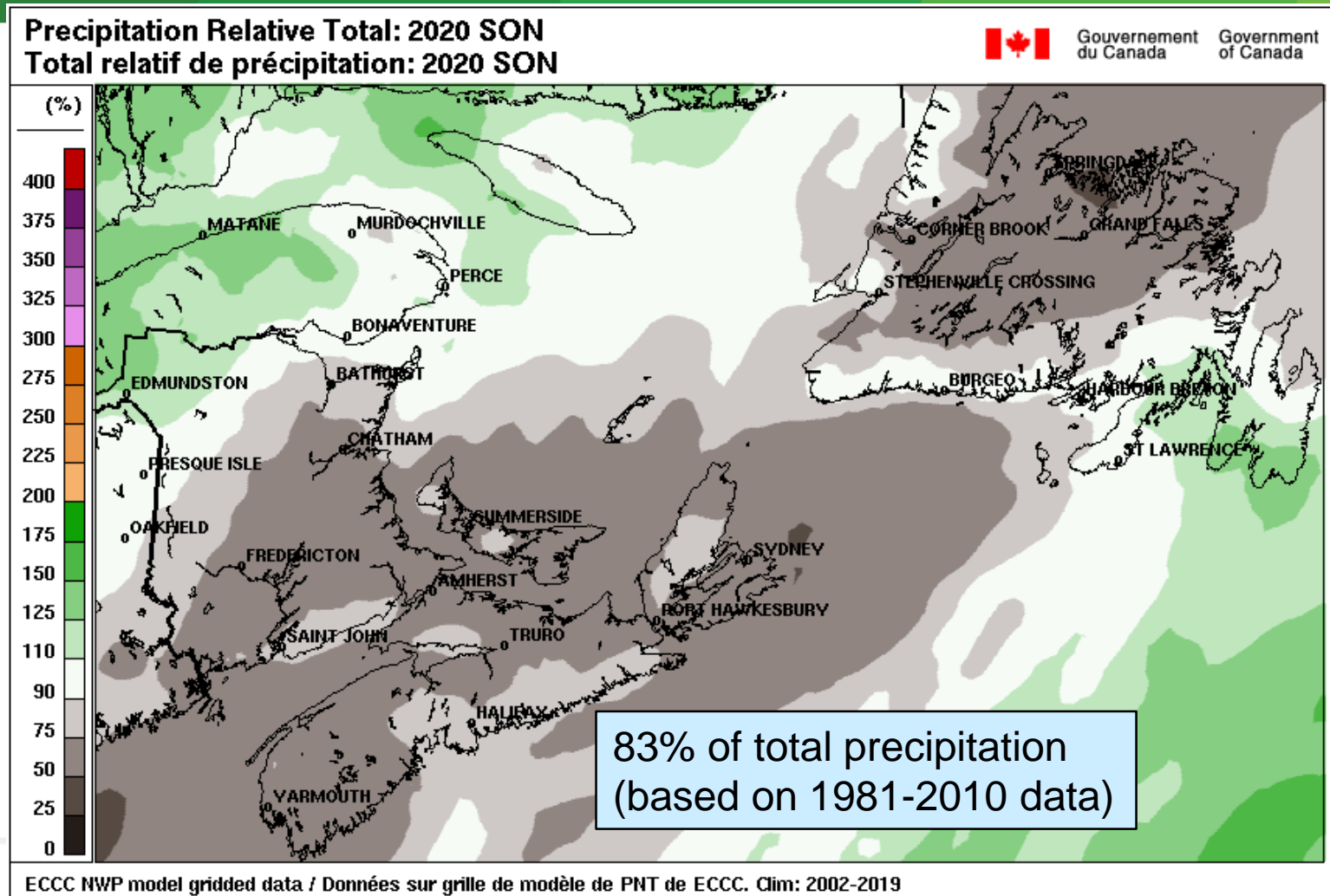


Environment and
Climate Change Canada

Environnement et
Changement climatique Canada

Canada

Fall 2020 (S,O,N) Precipitation departure from 2022-2019 mean



Gouvernement
du Canada

Government
of Canada

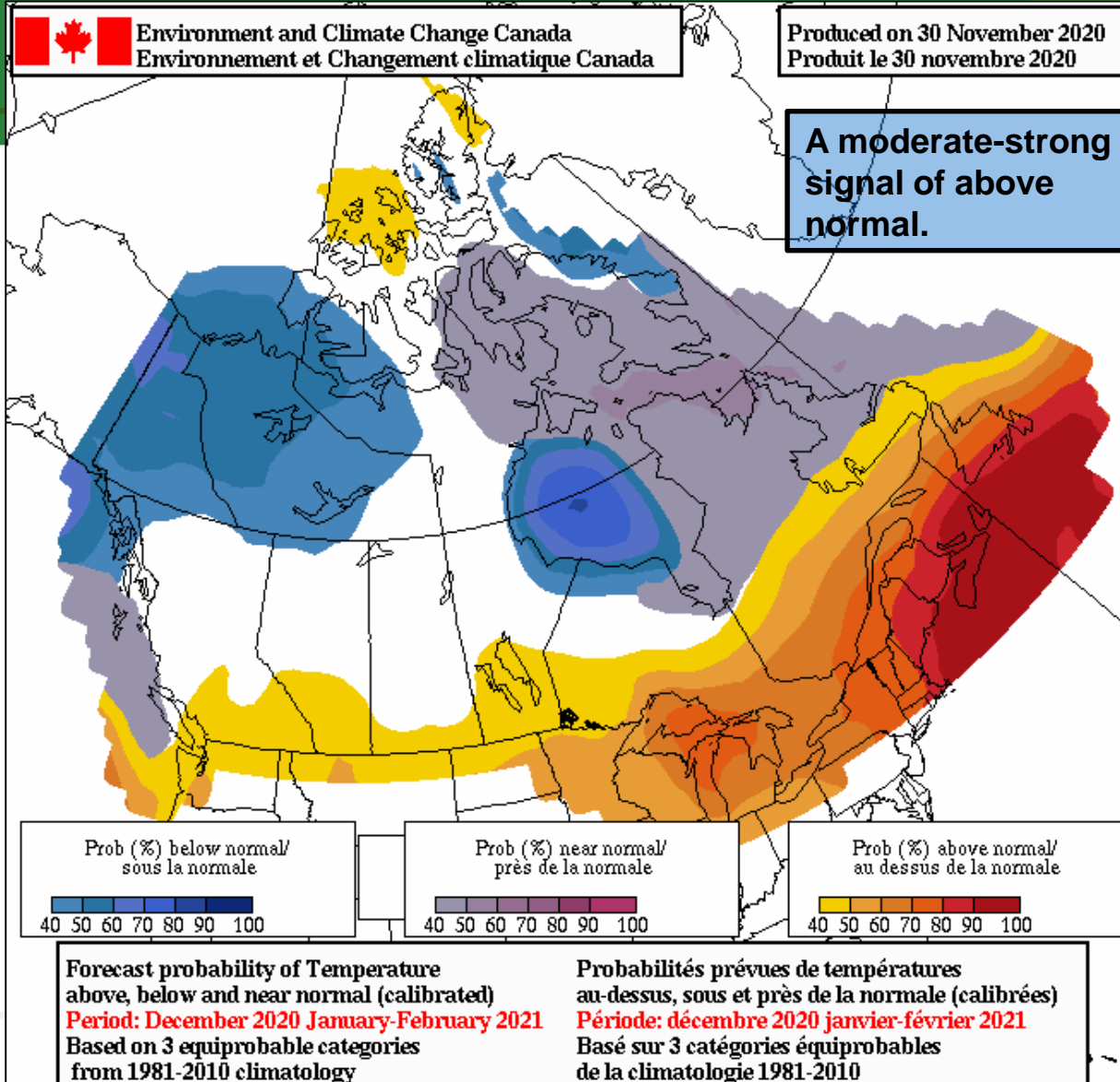


Environment and
Climate Change Canada

Environnement et
Changement climatique Canada

Canada

Outlook – Winter 2020/21 (D,J,F)

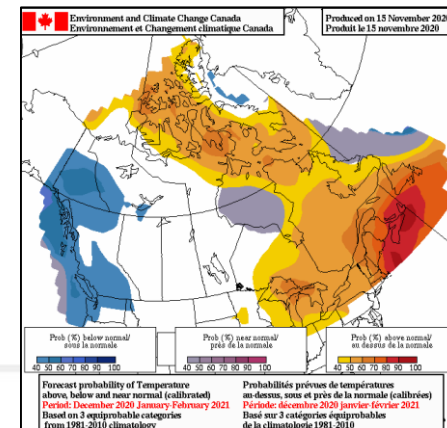


Temperature

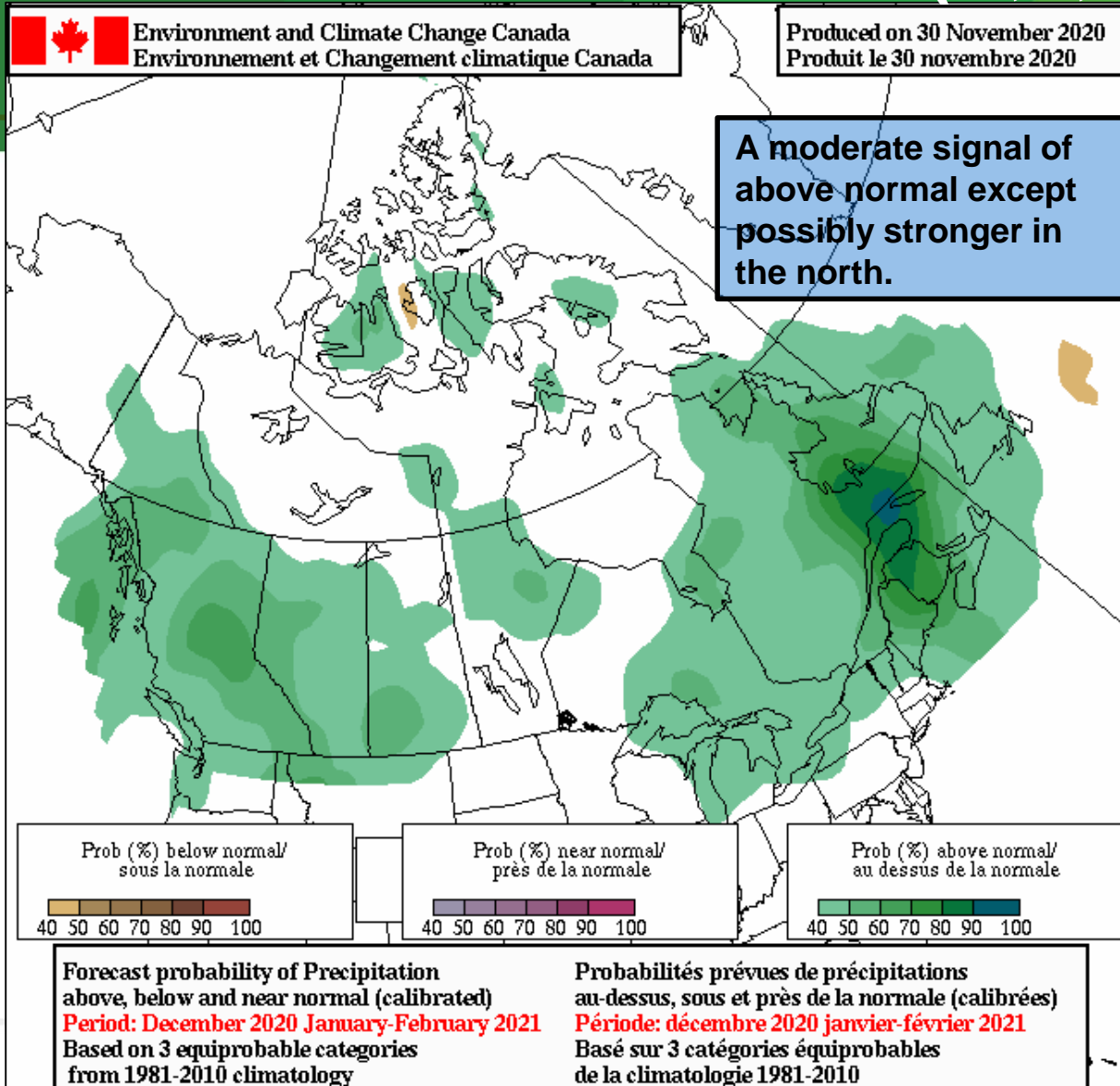
**December 2020
January 2021
February 2021**

**NB (D,J,F)
Normal; -2/-13°C**

Produced November 15



Outlook – Winter 2020/21 (D,J,F)

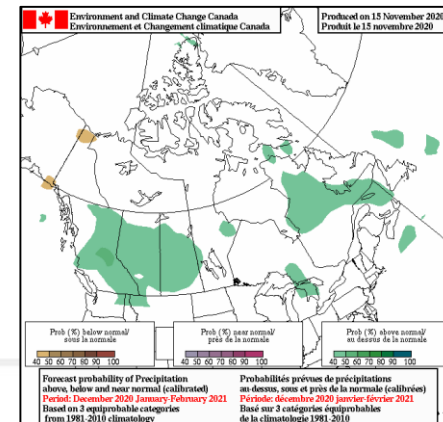


Precipitation

December 2020
January 2021
February 2021

NB (D,J,F)
Normal; ~263 mm

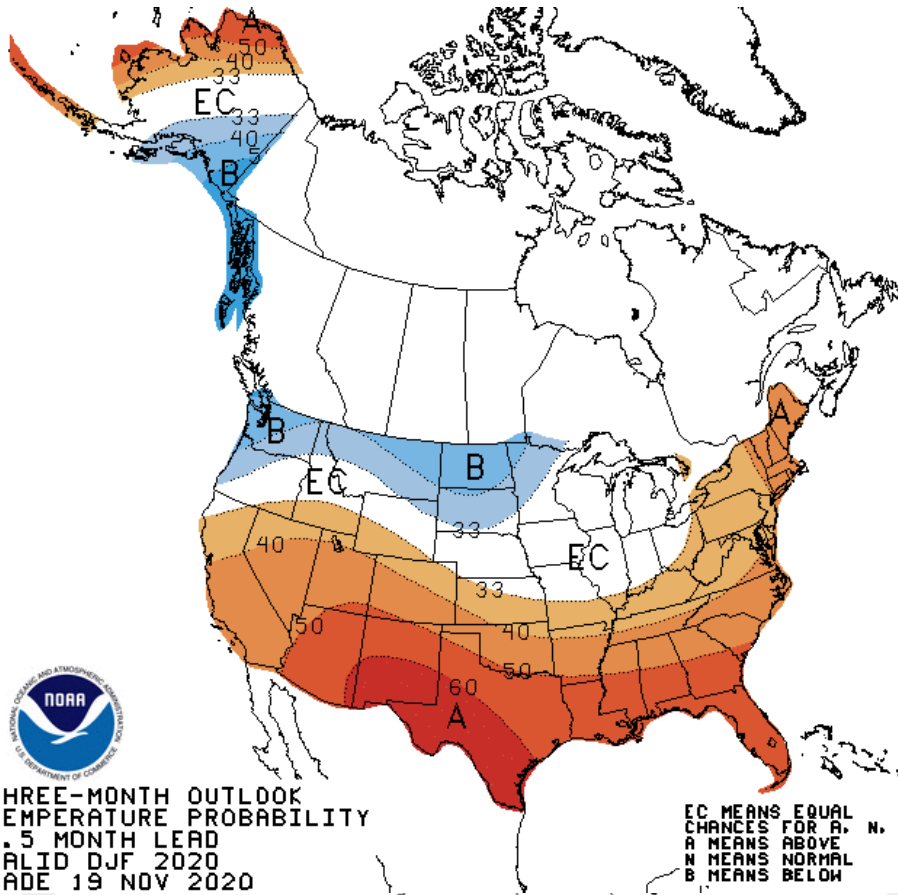
Produced November 15



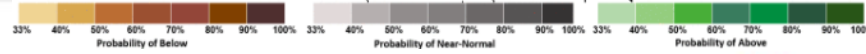
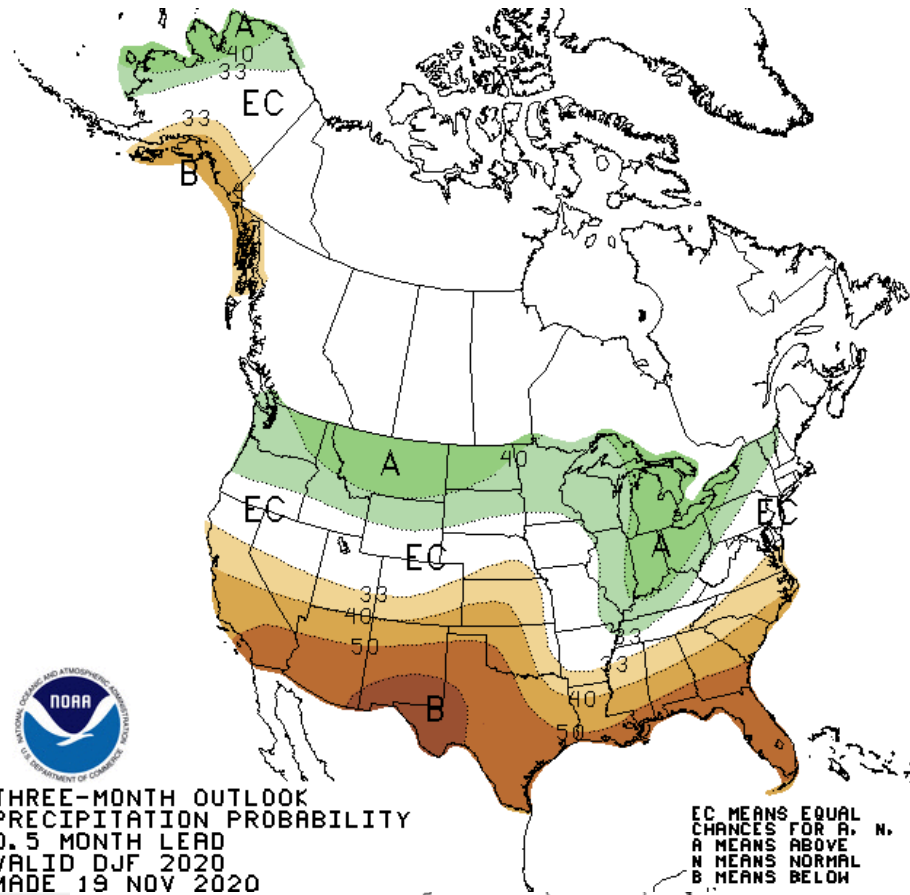


December - January - February

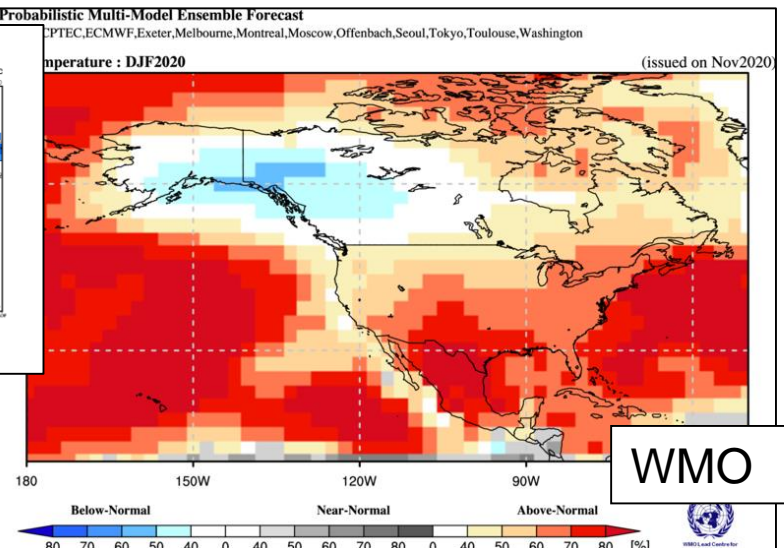
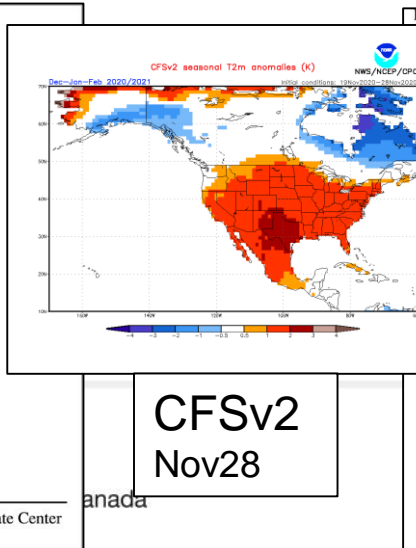
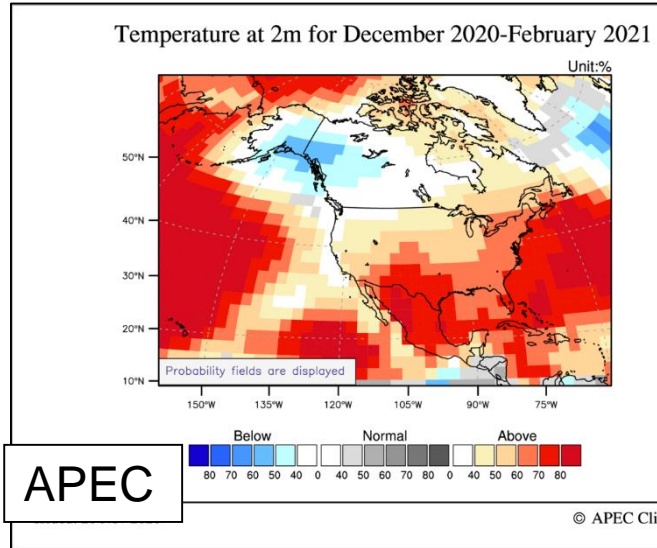
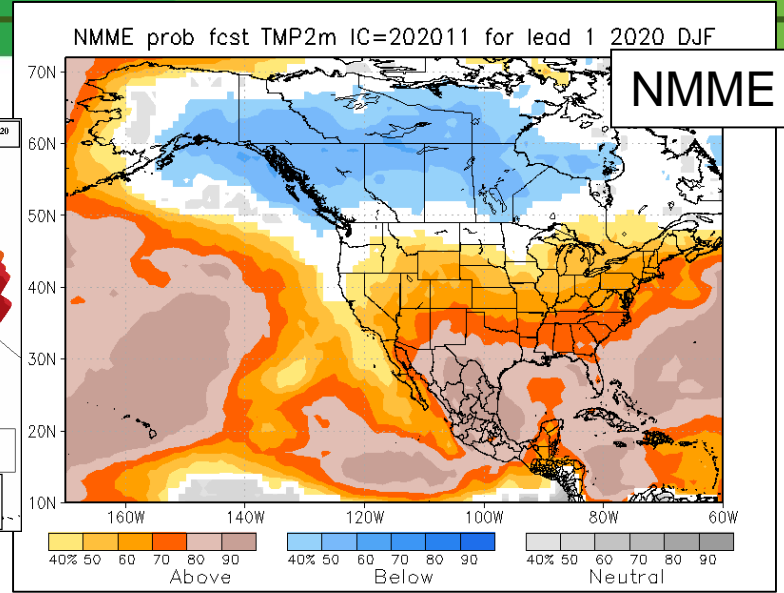
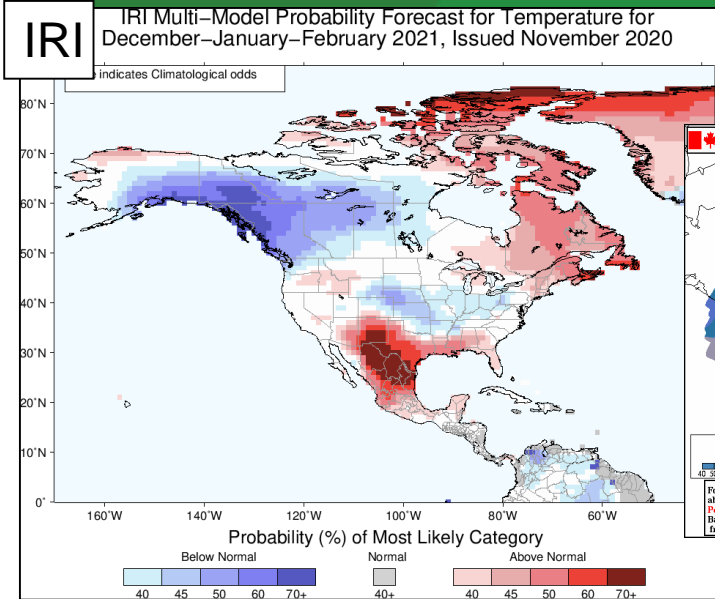
Temperature



Precipitation



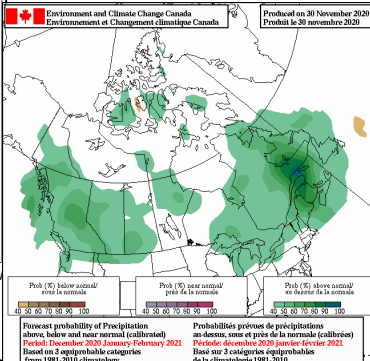
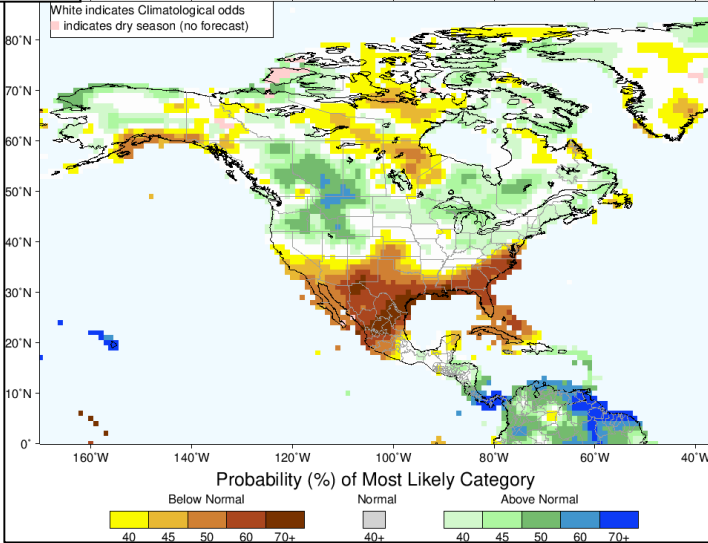
Winter 2020 Probabilistic Forecast from foreign models (temperature)



Winter 2020 Probabilistic Forecast from foreign models (precipitation)

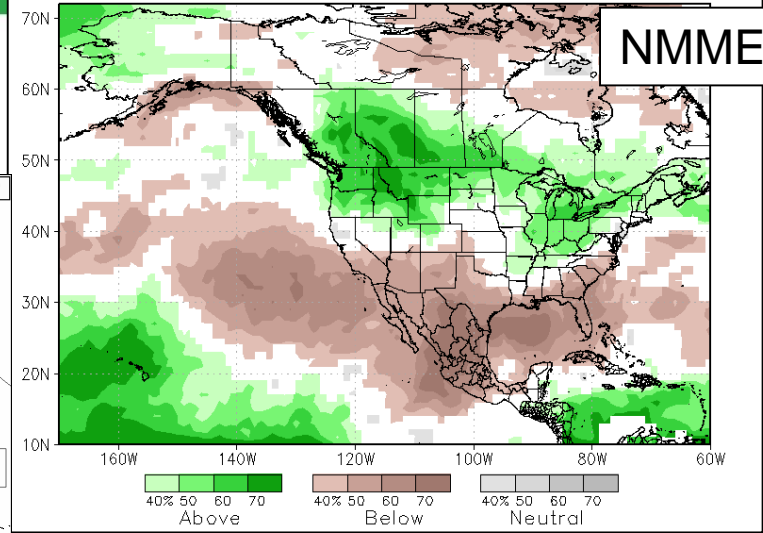
IRI

IRI Multi-Model Probability Forecast for Precipitation for December-January-February 2021, Issued November 2020

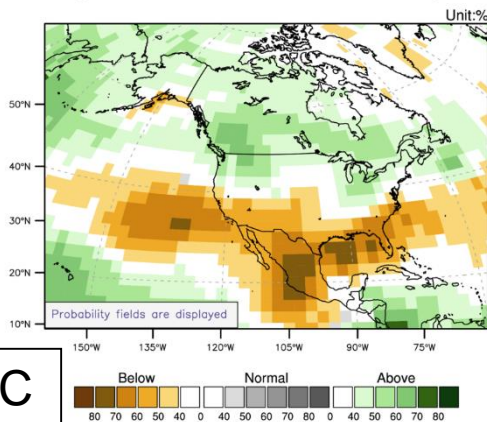


The most recent

NMME prob fcst Prate IC=202011 for lead 1 2020 DJF



Precipitation for December 2020-February 2021



APEC

Issued: 20 Nov 2020

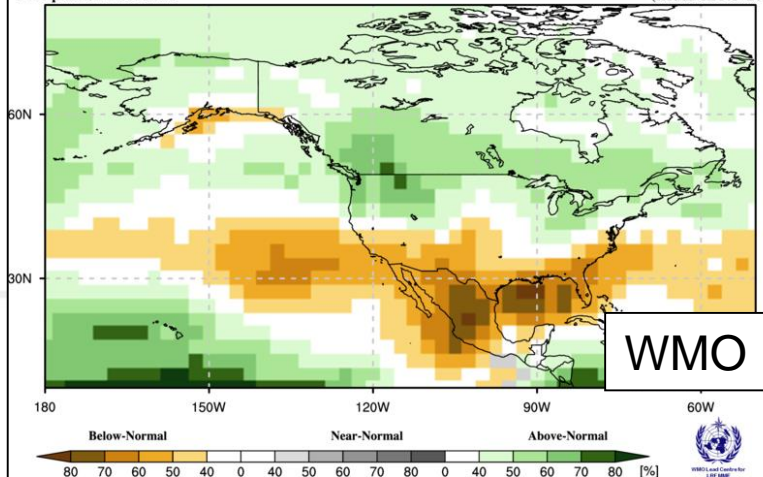
© APEC Climate Center

Probabilistic Multi-Model Ensemble Forecast

Beijing, CPTEC, ECMWF, Exeter, Melbourne, Montreal, Moscow, Offenbach, Seoul, Tokyo, Toulouse, Washington

Precipitation : DJF2020

(issued on Nov2020)



canada

2020 Atlantic Tropical Season Summary



NATIONAL HURRICANE CENTER

NATIONAL OCEANIC AND ATMOSPHERIC ADMINISTRATION



2020 Atlantic Tropical Cyclone Names

Arthur	Hanna	Omar	Alpha	Iota	Rho
Bertha	Isaias	Paulette	Beta	Kappa	Sigma
Cristobal	Josephine	Rene	Gamma	Lambda	Tau
Dolly	Kyle	Sally	Delta	Mu	Upsilon
Edouard	Laura	Teddy	Epsilon	Nu	Phi
Fay	Mario	Vicky	Zeta	Xi	Chi
Gonzalo	Nana	Wilfred	Theta	Omicron	Psi
				Pi	Omega

The 2020 Atlantic hurricane season set a new record with 30* named storms. The previous record was in 2005 with 28.

*it is still possible to have a named storm in Dec.

8 named storms entered the Canadian Hurricane Centre Response Zone

	<u>Average</u>	<u>Actual</u>
Named Storms:	12	30
Hurricanes:	6	13
Major Hurricanes:	3	6



Environment and
Climate Change Canada

Environnement et
Changement climatique Canada

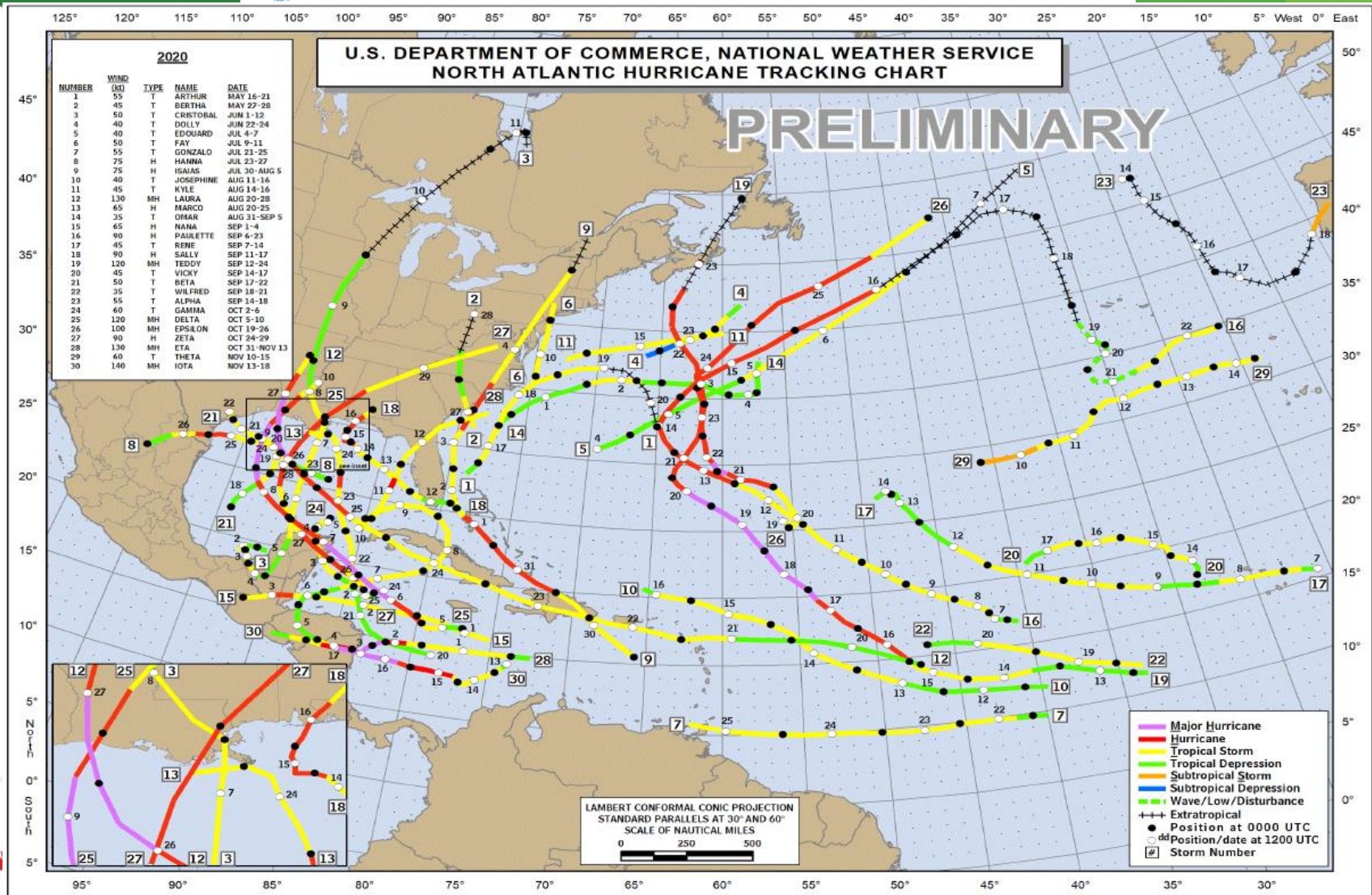
Canada

Tropical Season Summary 2020

(preliminary as of December 1 2020)



NATIONAL HURRICANE CENTER
 NATIONAL OCEANIC AND ATMOSPHERIC ADMINISTRATION



Contact

Jill Maepea

Warning Preparedness Meteorologist

jill.maepea@canada.ca

Environment and Climate Change

Canada Weather Pages

www.weather.gc.ca

